

Voltage Control in Distribution System with Reactive Power Dispatch

Bharat Singh^{1*}, Jagnandan Negi², Satyaveer Singh Rawat³

Electrical Engineering Department, NIT Kurukshetra, Haryana, India

*Corresponding Author: Bharat Singh, Ph.D. Scholar, Electrical Engineering Department, NIT Kurukshetra, Haryana, India

Received: 24 December 2020/ Revised: 03 January 2021/ Accepted: 17 January 2021/ Published: 31-01-2021

Copyright © 2021 International Journal of Engineering Research and Science

This is an Open-Access article distributed under the terms of the Creative Commons Attribution Non-Commercial License (<https://creativecommons.org/licenses/by-nc/4.0>) which permits unrestricted Non-commercial use, distribution, and reproduction in any medium, provided the original work is properly cited.

Abstract— Due to large resistance and lower reactance of lines, the voltage control and power loss became a crucial issue. The flat voltage profile, is therefore expected to distribution system at each node, minimum power loss, the maximum cost of saving and maximum efficiency. In this context, to find the size and location of compensating devices for the reactive power and voltage control devices became the essential need. In this paper, the multi-objective optimisation problem is solved for the sizing and location of reactive power compensating devices in the distribution system. The main contributions of the proposed work are

- (i) To address the hybrid algorithm to determine the location and size of Distribution Static Synchronous Compensator (D-STATCOM).
- (ii) The power loss and voltage deviation are minimised.
- (iii) The impact of D-STATCOM with minimum voltage growth is analysed.

The results are verified, tabulated and compared with other methods. The IEEE-33 bus test system has been taken for the analysis.

Keywords— Power loss minimisation, voltage deviation, D-STATCOM.

I. INTRODUCTION

The reactive power has been compensated using the capacitor banks, synchronous condenser, tap changers and voltage regulators etc, in the earlier distribution system. The optimal operation of the distribution network operator is comprised of the better voltage profile at each node, minimum power loss and higher cost of energy saving. The flat voltage profile is therefore expected to distribution system at each node, minimum power loss, the maximum cost of saving and maximum efficiency. One of the operations is to reactive power compensating devices which aims to manage the voltage control and reactive power control for minimisation of power loss.

The power loss has been reduced using the capacitor bank for power factor improvement also [1]. The active and reactive power has been compensated using the distribution generations and capacitor bank [2]. The meta-heuristic techniques are used to solve the reactive power dispatch problems [3]. In this context, the two-archive multi-objective grey wolf optimizer [4], modified differential evolution technique [5], multi-objective strategy [6], a combined swarming algorithm [7], gravitational search algorithm [8], learning based technique [9] etc., have been used for the reactive power dispatch. The uncertainty in renewable based generation has been implemented for reactive power dispatch, although the compensating

devices were not used [10]. Apart from this, the distribution D-FACT devices have used to avoid the switching problem in capacitor bank for the reactive power dispatch and voltage control. The reactive power dispatch has been determined using the sitting of capacitor banks, tap position of tap changing transformers and generator voltage [11]. However the penalty based optimization problem has also been considered for the reactive power dispatch [12]. Apart from the above literature, the D-STATCOM has been used instead of capacitor bank for the reactive power dispatch and voltage control. In this context, the probabilistic assessments have been used for the D-STATCOM installation [13]. The D-STATCOM has been installed for the economic load sharing also [14]. The D-STATCOM has been installed to mitigate the low voltage fluctuations in the distribution system [15]. The voltage instability problem has also been mitigates using the D-STATCOM [16]. The various optimization techniques have been implemented for the installation of the D-STATCOM [17], lightning search algorithm (LSA) [18], the direct load flow (DLF) approach in [19], cuckoo search algorithm (CSA) [20], Levy flights algorithm [20] etc.

As evidenced by the literature review, the proposed work aims to determine the size and location of D-STATCOM for minimising the power loss and voltage deviation. The key contribution of this work is as follows:

- (i) Determine the location and size of D-STATCOM to obtain the optimal reactive power dispatch.
- (ii) To propose the GAMS algorithm for solving the multi-objective problem,
- (iii) The rating of D-STATCOM has also been considered with the multi-objective problem.

The present work has been tested in IEEE-33 bus test system of radial distribution (RDS). The results have been tabulated and compared with the other existing methods and techniques also.

In this paper, the total of five sections is represented. In section 2, the problem formulation and system modeling is represented. In section 3, the proposed algorithm is explained. In section 4, the results part is discussed. In the last section 5, the paper is concluded.

II. PROBLEM FORMULATION AND MATHEMATICAL MODEL

In this section, the problem formulation and the mathematical model have been explained as follows;

The multi-objective function has been carried out for the analysis. In:

Objective 1: power loss has been determined.

Objective 2: the voltage deviation has been minimised.

The optimal location of D_STATCOM is determined to minimise the cost of energy loss and voltage deviation, as explained in equation (1) and (2).

$$\min\{f_1\} = \sum_k^T \sum_i^{nb} \sum_j^{nl} |P_{Loss,ij}^k| \quad (1)$$

$$\min\{f_2\} = \sum_k^T \sum_i^{nb} \left| \frac{(V_o - V_i^k)}{V_o} \right| \times 100 \quad (2)$$

The following constraints are considered;

Power balance constraints are represented in eq. (3) and (4).

$$P_i^k = (Pg_i^k - Pd_{ZIP,i}^k) = V_i^k \sum_{j=1}^n V_j^k (G_{ij} \cos(\delta_i^k - \delta_j^k) + B_{ij} \sin(\delta_i^k - \delta_j^k)) \quad (3)$$

$$Q_i^k = (Qg_i^k - Qd_{ZIP,i}^k) = V_i^k \sum_{j=1}^n V_j^k (G_{ij} \sin(\delta_i^k - \delta_j^k) - B_{ij} \cos(\delta_i^k - \delta_j^k)) \quad (4)$$

$\forall i \in S_B \& k \in S_T$

Where the generated power Pg_i^k and Qg_i^k is represented in (5) and (6)

$$Pg_i^k = Pgrid_i^k + \sum_j^{nl} P_{Loss,ij}^k \quad (5)$$

$$Qg_i^k = Pgrid_i^k + Q_{DST,i}^k + \sum_j^{nl} Q_{Loss,ij}^k \quad (6)$$

D-STATCOM limits: this includes the maximum and minimum limits.

$$Q_{DSTmin,i}^k \leq Q_{DST,i}^k \leq Q_{DSTmax,i}^k \quad (7)$$

Power loss equation represents in (10): this includes the maximum power limit.

$$|P_{Loss,ij}^k| = \left| \sum_k^T \sum_i^{nb} G_{ij}^k \{ (V_i^k)^2 + (V_j^k)^2 - 2V_i^k V_j^k \cdot \cos(\delta_i^k - \delta_j^k) \} \right| \leq Pl_{max}^k \quad (8)$$

Limits for the generation: this includes the maximum and minimum limits.

$$P_{Gi}^{min} \leq Pg_i \leq P_{Gi}^{max}, i \in S_G \quad (9)$$

$$Q_{gi}^{min} \leq Qg_i \leq Q_{gi}^{max}, i \in S_G \quad (10)$$

Voltage and load angle limit

$$V_{i,k}^{min} \leq V_i^k \leq V_{i,k}^{max}, i \in S_B \quad (11)$$

$$\delta_{min_i}^k \leq \delta_i^k \leq \delta_{max_i}^k, \quad (12)$$

$\forall i = 1, 2 \dots nb$

Power factor limit of the system is limited by (15)

$$pf_i^{lo} \leq pf_i \leq pf_i^{up}, i \in S_B \quad (13)$$

III. ALGORITHM USED

In this section, the proposed algorithm has been explained as follows;

The MATLAB and GAMS have been carried out for solving the problem. The location and size of D-STATCOM is determined using NLP solver in GAMS. The following steps are used to solve the multi-objective problem.

Step 1: Read the test system bus and line data.

Step 2: Run the load flow program for 24-hrs and obtain the candidate node having the highest power loss and voltage deviation for D-STATCOM location. Save the candidate node.

Step 3: After obtaining the location of the candidate node, the size of D-STATCOM has determined. Transfer the all control parameter from MATLAB to GAMS.

Solve the objective function (1) and (2). Solve the constraints equation from (3) to (13).

Step 4: Transfer the objective variables form GAMS to MATLAB.

Step 5: Save and Print the results.

The flow chart of the proposed algorithm is shown in Figure 1.

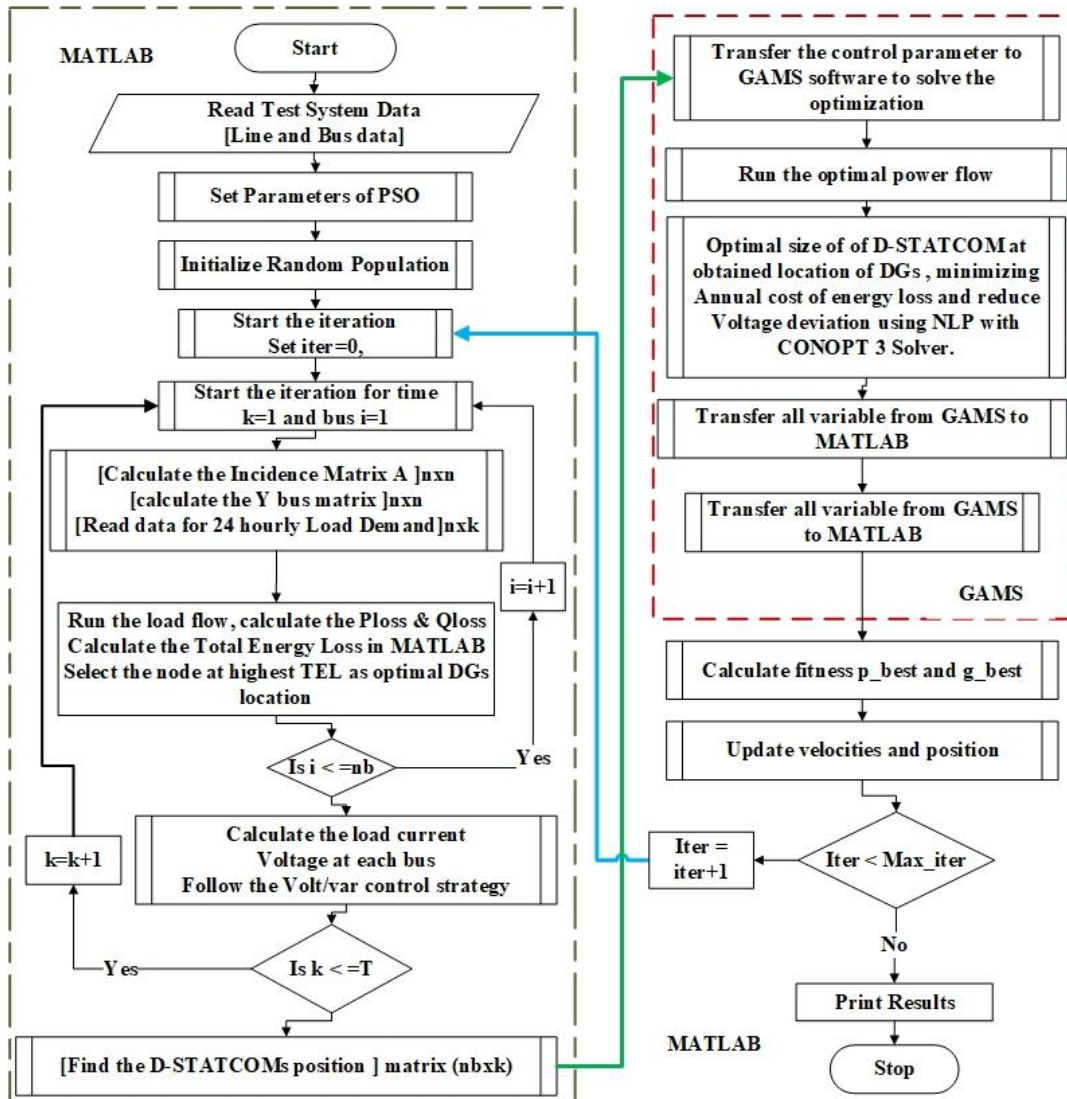


FIGURE 1: Flow chart for the proposed algorithm

IV. RESULT AND DISCUSSION

In this section, the simulation results have been presented and discussed to study the D-STATCOM in distribution system. Furthermore, the proposed technique has been tested on distribution system: 100 MVA 12.66 kV IEEE 33 bus test system. Moreover, the rating of D-STATCOM has been determined with minimum voltage growth from 0.90 to 0.95 pu for better reactive power sources to minimise the power loss. The rating of multiple D-STATCOM, power loss, annual cost of energy loss, and saving of energy loss have been analysed. The following cases have been carried out for the analysis as follows;

Case 1: The impact of single D-STATCOM.

Case 2: The impact of multiple D-STATCOM.

Case 3: The impact of time-varying ZIP load with D-STATCOM.

The test system has been carried out with the above mentioned cases.

4.1 Result for Test system 1: IEEE 33 bus test system

In this section, the D-STATCOM rating and location have been determined to obtain the reactive power dispatch and maximum energy saving in IEEE 33-bus system.

In the base case, the peak demand of the distribution system is 3715+j2300 kVA. The base case power loss is 202.66+j135.13 kVA annual cost of energy loss is \$106518.1, and the minimum voltage is 0.9047930 pu.

4.1.1 Installation of D-STATCOM

The optimal location obtained for the single D-STATCOM is 30th bus, and the multiple D-STATCOM of two nodes is 12th and 30th, respectively. Furthermore, the rating of single D-STATCOM obtained is 1257.89 kVAr at 30th bus for power loss saving. The power loss obtained after installation of D-STATCOM is 145.3001+j*98.07289 kVA, the voltage profile has enhanced to 0.9245 pu, and the annual cost of energy loss obtained is \$79365. Therefore, the saving in annual energy loss obtained is \$23481.6 (28.303%).

In this context, the multiple D-STATCOM of 464.98 kVAr, and 1063.3 kVAr are installed at bus 12th and 30th, respectively. The power loss has been reduced to 136.1395+j*91.10344 kVA with multiple D-STATCOM. Therefore, the annual cost of energy loss obtained is \$74359, and the annual saving in energy loss obtained is \$36338 (32.827%). In Figure 2 the voltage profile with installation of D-STATCOM is shown.

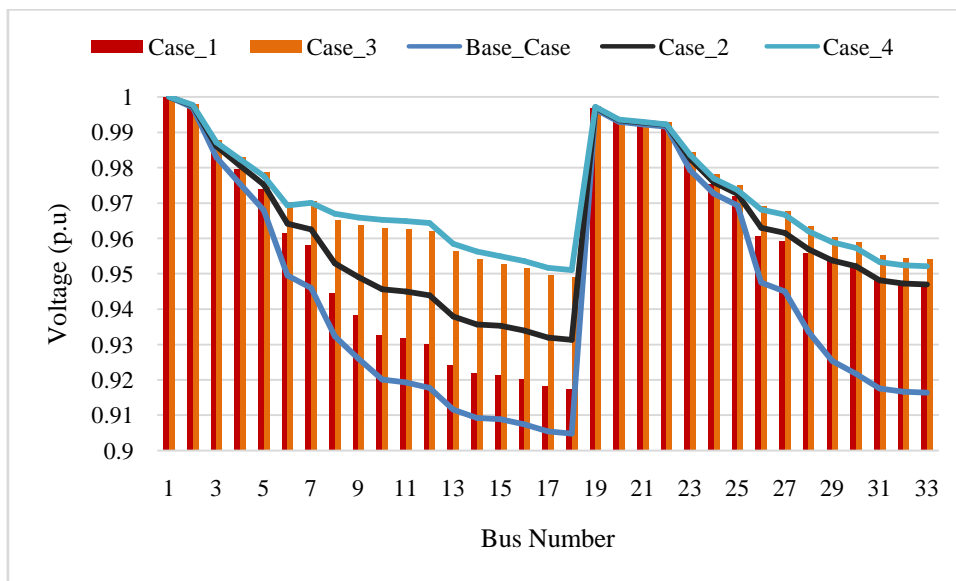


FIGURE 2: Minimum voltage profile with the installation of D-STATCOM in IEEE 33 bus system

**TABLE 1
COMPARISON OF RESULTS FOR 33- BUS SYSTEM**

Descriptions	Base Case	PSO [21]	BFOA [22]	LSF [19]	BAT [23]	IA [24]	GA [24]	Proposed with D-STATCOM
Optimal location at bus	-----	30	30	30	30	12	12	30
Rating of D-STATCOM (kVAr)	-----	1380	1102.7	3200	1150	962.49	1114.2	1257.89
Min. voltage (pu)	0.91309	0.92677	0.92422	0.9023	0.9244	0.9258	0.9236	0.9245
Total power loss (kW)	202.66	144.17	144.38	198.25	143.97	171.81	173.95	145.3
Loss reduction (%)	-----	28.86	28.75	2.17	28.95	15.22	14.16	28.30
Total annual cost (\$)	106518.1	83089.75	81730.44	121160.2	81765.63	95404.53	97333.38	83036.5
Cost of Compensation (\$)		7314	5844.31	16960	6095	5101.197	5905.26	6666.817
Annual cost of energy loss (\$)	106518.1	75775.75	75886.13	104200.2	75670.63	90303.34	91428.12	76369.68
Annual cost of energy loss saving (\$)	0	23428.34	24787.66	-14642.1	24752.46	11113.56	9184.716	23481.6

The results have been compared with other existing methods and techniques as given in Table 1, the proposed method has shown better results with another method for the minimum power loss and voltage enhancement. Moreover, the power loss is reduced to 28.303%, and the minimum voltage is increased to 0.9245 pu with the proposed algorithm. Although, the size of D-STATCOM obtained is 1257.89kVAr for loss minimisation and voltage enhancement.

TABLE 2
COMPARISON OF RESULT OF MULTIPLE D-STATCOM IN 33 BUS SYSTEM

Descriptions	Base Case	PSO[21]	BFOA[22]	BAT[23]	Proposed with D-STATCOM
Optimal location at bus	-----	12, 30	10, 30	10, 30	12, 30
Rating of D-STATCOM (kVAr)	-----	472 (12) 1062 (30)	600 (10) 1200 (30)	450 (10) 995 (30)	464.98 (12) 1063.3 (30)
Total D-STATCOM (kVAr)		1534	1800	1445	1528.28
Min. voltage (pu)	0.91309	0.93636	0.9392	0.9356	0.9245
Total power loss (kW)	202.66	135.75	137.5	136.05	135.896
Loss reduction (%)	-----	33.015	32.15	32.86	32.9438
Total annual cost (\$)	106518.096	79480.4	81810	79166.38	79654.8052
Annual cost of energy loss (\$)	106518.096	71350.2	72270	71507.88	71554.9212
Cost of compensation (\$)	0	8130.2	9540	7658.5	8099.884
Annual cost of saving (\$)	0	27037.696	24708.096	27351.716	26991.27

The power loss obtained is 135.896kW, the minimum voltage is 0.9245 pu, the annual cost of energy loss is \$71554.92, with multiple D-STATCOM at bus 12 and 30, as given in Table I. Moreover, the D-STATCOM of 464.98 kVAr at 12 bus, and 1063.3 kVAr at 30th bus. The power loss is reduced to 32.94 %, with the proposed method is compared to another method.

V. CONCLUSION

It is observed that the proposed method has better results as compared with other techniques likewise PSO, LSF, BFOA, GA, and IA etc. The results are first analysed and compared with another technique considering D-STACOM only. In this context, the minimum voltage is obtained upto 0.95 pu with an optimal size of D-STATCOM and minimum power loss, by taking the D-STATCOM. Therefore, the following points concluded for the optimal solution of IEEE-33 bus test system are; the voltage deviation is reduced to 3.805 % form 5.456 % (base case), and power loss is reduced to 32.82% with multiple D-STATCOM. In the above-mentioned points the power loss and voltage deviation are reduced with D-STATCOM. Moreover, the voltage and power factor are remained within the limits. In addition, the new concept of D-STATCOM Therefore, the proposed approach has better results with other methods.

REFERENCES

- [1] A. Chandra and T. Agarwal, "Capacitor Bank Designing for Power Factor Improvement," *Ijetae*, vol. 4, no. 8, pp. 235–239, 2014, doi: 10.1016/0957-4166(94)80092-8.
- [2] S. Kansal, V. Kumar, and B. Tyagi, "Composite active and reactive power compensation of distribution networks," *2012 IEEE 7th Int. Conf. Ind. Inf. Syst. ICIIS 2012*, vol. 247667, pp. 1–6, 2012, doi: 10.1109/ICIInfS.2012.6304764.
- [3] "Solution to optimal reactive power dispatch in transmission system using meta-heuristic techniques—Status and technological review.pdf."
- [4] K. Nuaekaw, P. Artrit, N. Pholdee, and S. Bureerat, "Optimal reactive power dispatch problem using a two-archive multi-objective grey wolf optimizer," *Expert Syst. Appl.*, vol. 87, pp. 79–89, 2017, doi: 10.1016/j.eswa.2017.06.009.
- [5] S. Biswas Raha and N. Chakraborty, "Tuned reactive power dispatch through modified differential evolution technique," *Front. Energy*, vol. 6, no. 2, pp. 138–147, 2012, doi: 10.1007/s11708-012-0188-8.
- [6] A. Ghasemi, K. Valipour, and A. Tohidi, "Multi objective optimal reactive power dispatch using a new multi objective strategy," *Int. J. Electr. Power Energy Syst.*, vol. 57, pp. 318–334, 2014, doi: 10.1016/j.ijepes.2013.11.049.
- [7] S. M. Shareef and R. Srinivasa Rao, "Optimal reactive power dispatch under unbalanced conditions using hybrid swarm intelligence," *Comput. Electr. Eng.*, vol. 69, no. June, pp. 183–193, 2018, doi: 10.1016/j.compeleceng.2018.05.011.
- [8] S. Duman, Y. Sönmez, U. Güvenç, and N. Yörükeren, "Optimal reactive power dispatch using a gravitational search algorithm," *IET Gener. Transm. Distrib.*, vol. 6, no. 6, pp. 563–576, 2012, doi: 10.1049/iet-gtd.2011.0681.
- [9] M. Ghasemi, M. Taghizadeh, S. Ghavidel, J. Aghaei, and A. Abbasian, "Solving optimal reactive power dispatch problem using a

- novel teaching-learning-based optimization algorithm,” *Eng. Appl. Artif. Intell.*, vol. 39, pp. 100–108, 2015, doi: 10.1016/j.engappai.2014.12.001.
- [10] S. M. Mohseni-Bonab, A. Rabiee, and B. Mohammadi-Ivatloo, “Voltage stability constrained multi-objective optimal reactive power dispatch under load and wind power uncertainties: A stochastic approach,” *Renew. Energy*, vol. 85, pp. 598–609, 2016, doi: 10.1016/j.renene.2015.07.021.
- [11] A. Rajan and T. Malakar, “Optimal reactive power dispatch using hybrid Nelder-Mead simplex based firefly algorithm,” *Int. J. Electr. Power Energy Syst.*, vol. 66, pp. 9–24, 2015, doi: 10.1016/j.ijepes.2014.10.041.
- [12] E. M. Soler, E. N. Asada, and G. R. M. Da Costa, “Penalty-based nonlinear solver for optimal reactive power dispatch with discrete controls,” *IEEE Trans. Power Syst.*, vol. 28, no. 3, pp. 2174–2182, 2013, doi: 10.1109/TPWRS.2013.2252207.
- [13] S. Rezaeian-Marjani, S. Masoumzadehasl, S. Galvani, and V. Talavat, “Probabilistic assessment of D-STATCOM operation considering correlated uncertain variables,” *Int. Trans. Electr. Energy Syst.*, vol. 30, no. 10, pp. 1–23, 2020, doi: 10.1002/2050-7038.12522.
- [14] S. Choudhury, P. Bhowmik, and P. K. Rout, “Economic load sharing in a D-STATCOM Integrated Islanded Microgrid based on Fuzzy Logic and Seeker Optimization Approach,” *Sustain. Cities Soc.*, vol. 37, no. July 2017, pp. 57–69, 2018, doi: 10.1016/j.scs.2017.11.004.
- [15] M. M. Aggarwal and P. S. K. Gupta, “D-STATCOM control in Low Voltage Distribution System with Distributed,” pp. 426–429, 2010, doi: 10.1109/ICETET.2010.148.
- [16] I. N. Power, “Reactive Power Compensation using D-STATCOM with Fuzzy Logic Supervision,” pp. 1–6, 2016.
- [17] V. V. S. N. Murty and A. Kumar, “Impact of D-STATCOM in distribution systems with load growth on stability margin enhancement and energy savings using PSO and GAMS,” *Int. Trans. Electr. Energy Syst.*, vol. 28, no. 11, pp. 1–24, 2018, doi: 10.1002/etep.2624.
- [18] Y. Thangaraj and R. Kuppan, “Multi-objective simultaneous placement of DG and DSTATCOM using novel lightning search algorithm,” *J. Appl. Res. Technol.*, vol. 15, no. 5, pp. 477–491, 2017, doi: 10.1016/j.jart.2017.05.008.
- [19] F. Iqbal, M. T. Khan, and A. S. Siddiqui, “Optimal placement of DG and DSTATCOM for loss reduction and voltage profile improvement,” *Alexandria Eng. J.*, vol. 57, no. 2, pp. 755–765, 2018, doi: 10.1016/j.aej.2017.03.002.
- [20] M. Ghosh, S. Kumar, S. Mandal, and K. K. Mandal, “Optimal sizing and placement of DG units in radial distribution system using cuckoo search algorithm,” *Int. J. Appl. Eng. Res.*, vol. 12, no. Special Issue 1, pp. 362–369, 2017.
- [21] S. Devi and M. Geethanjali, “Electrical Power and Energy Systems Optimal location and sizing determination of Distributed Generation and DSTATCOM using Particle Swarm Optimization algorithm,” *Int. J. Electr. POWER ENERGY Syst.*, vol. 62, pp. 562–570, 2014, doi: 10.1016/j.ijepes.2014.05.015.
- [22] K. R. Devalalaji and K. Ravi, “Optimal size and siting of multiple DG and DSTATCOM in radial distribution system using Bacterial Foraging Optimization Algorithm,” *Ain Shams Eng. J.*, vol. 7, no. 3, pp. 959–971, 2016, doi: 10.1016/j.asej.2015.07.002.
- [23] T. Yuvaraj, K. Ravi, and K. R. Devalalaji, “DSTATCOM allocation in distribution networks considering load variations using bat algorithm,” *Ain Shams Eng. J.*, vol. 8, no. 3, pp. 391–403, 2017, doi: 10.1016/j.asej.2015.08.006.
- [24] S. A. Taher and S. A. Afsari, “Optimal location and sizing of DSTATCOM in distribution systems by immune algorithm,” *Int. J. Electr. Power Energy Syst.*, vol. 60, pp. 34–44, 2014, doi: 10.1016/j.ijepes.2014.02.020.