

Study of Material Management in Construction Industry

Jimit Chotai¹, R Mahadeva Swamy², Pratibha Patil³

Department of Civil Engineering, VIVA Institute of Technology

Abstract— *Materials are one of the important part of the construction industry. Materials contribute about 50-60% of the total cost of the project. As materials forms a major constitute of the total cost of the construction project, therefore adequate control over the purchasing, supplier selection, receiving, delivery, issuing storage, movement and its consumption is necessary. The most important among this is supplier selection and it leads to the success of and construction project. Supplier selection includes qualitative and quantitative factors. In this project, for the purpose of supplier selection in VVCMC (Vasai Virar City Municipal Corporation) region various data about the supplier like personal detail, location, quantity, quality, cost, delivery services, discount, transportation, communication facility, etc. are collected. Collection of these information would be less time consuming using database. This all data is imported in QGIS (Quantum GIS), since it is very effective tool for database management. By using QGIS software, digitise map of study area and roads is done. To locate the location of suppliers as per the requirements various queries are generated. It will also help in finding shortest route between supplier location and construction site.*

Keywords— - *Material Management, QGIS, Supplier selection, queries, shortest path.*

I. INTRODUCTION

This report covers Study region, Data collection and Data analysis of construction material suppliers present in Vasai-Virar Municipal Corporation. The Vasai-Virar City Municipal Corporation, (VVCMC) is the civic body that governs areas and villages in Vasai-Virar tehsil in Maharashtra state, western India comprising the most populated part of Palghar district. It is an extended suburb of Mumbai. According to the 2011 census, it is the fifth largest city in Maharashtra with a population of more than 1.3 million. The city is located 50 km north of Mumbai, on the north bank of Vasai Creek, part of the estuary of the Ulhas River. It was formed on 3 July 2009 by combining four municipal councils and 53 gram panchayats. Vasai-Virar City is the only Metropolitan City (having population more than 10 lakhs in Palghar district which is also having Municipal Corporation. It is located at North Mumbai. The area of Vasai-Virar City is 311 sq. km. Vasai-Virar City has been separated from Greater Mumbai and Mira-Bhayandar City because of presence of Vasai Creek. The City is well connected to Mumbai by Western Railway and through Mumbai-Ahmedabad National Highway. The city is connected to Navi Mumbai, Thane, Bhiwandi, Kalyan and Panvel cities by the Vasai-Diva Railway line. Vasai Virar city has significant growth potential due to close proximity to Brihan Mumbai. The Vasai-Virar City Municipal Corporation (VVCMC) was established on 3rd July 2009. Vasai Virar Corporation is located between 19 deg. 28 min. north-90 deg. 47 min. north latitude and 72 deg. 48 min. east-72 deg. 8 min. east. The VVMC is responsible for aiding in prevention of epidemic outbreaks through mass production of medicines, Cemeteries and Crematoria, Fire Stations, Garbage disposal and street cleanliness, House Tax, Lighthouses, Maintenance of parks and open spaces, Markets, shops, and establishments, Municipal water, Public health and hospitals, Registering of births and deaths, Removal of encroachments, Security, Sewage treatment and disposal, Street lighting, Transport and Construction of Roads.

II. LITERATURE REVIEW

2.1 Materials Management

Materials management is a process for planning, executing and controlling field and office activities in construction. The goal of materials management is to ensure that construction materials are available at their point of use when needed. The materials management system attempts to ensure that the right quality and quantity of materials are appropriately selected, purchased, delivered and handled on site in a timely manner and at a reasonable cost. Materials management is the system for planning and controlling all of the efforts necessary to ensure that the correct quality and quantity of materials are properly specified in a timely manner, are obtained at a reasonable cost and most importantly are available at the point of use when required. Thus, Materials

management is an important element in project management. Materials represent a major expense in construction, so minimizing procurement costs improves opportunities for reducing the overall project costs.

2.2 Purchasing procedure

- Step 1 – Material Indent
- Step 2 – Enquiry to Suppliers/Vendors
- Step 3 – Vendor Comparison
- Step 4 – Vendor Selection and Negotiations
- Step 5 – Purchase Order
- Step 6 – Suppliers/Vendor Evaluation

2.3 Receiving of materials

The receipt system can be divided into:

- Receipt from outside suppliers
- Receipts from internal divisions.

System of receipt starts even before the material reaches the site. The three documents that should be dispatched are copy of purchase order, supplier's advice document and the consignment note. This enables the Stores manager to organize and plan for clearances of materials. For receipt from internal divisions, usually transfer notes and return to stores documents are used.

2.4 Inspection of materials

- Pre-dispatch inspection
- Inspection on site

It is the responsibility of the inspector to inspect all materials delivered to the site prior to their being used in the work. It is desirable to perform inspection of materials or fabricated products prior to their delivery at site. The inspector shall have rights to reject faulty material and have it removed from site. With respect to manufactured goods, the quality requirements should be specified in the purchase order.

2.5 Geographical Information System (GIS)

A Geographic information system is a computer based system capable of capturing, storing, and analysing and displaying geographically referenced information; that identified according to location. Practitioners also define a GIS as including the procedures, operating personal and spatial data that goes into system. A GIS tool is used for mapping and analysing spatial data. GIS technology integrates common database operations such as query and statistical analysis with the unique visualization and geographic analysis benefits offered by maps.

2.6 Working of GIS

GIS stores information about the world as a collection of thematic layers that can be linked together by geography. This simple but extremely powerful and versatile concept has proven invaluable for solving many real world problems from modelling global atmospheric circulation, to predicting rural land use, and monitoring changes in rainforest ecosystems. 1. Geographic references 2. Input of data 3. Map making 4. Manipulation of data 5. File management 6. Query and Analysis 7. Visualization.

III. CASE STUDY

3.1 Study Region

The Vasai-Virar City Municipal Corporation, (VCCMC) is the civic body that governs areas and villages in Vasai-Virar tehsil in Maharashtra state, western India comprising the most populated part of Palghar district. It is an extended suburb of Mumbai.

According to the 2011 census, it is the fifth largest city in Maharashtra with a population of more than 1.3 million. It was formed on 3 July 2009 by combining four municipal councils and 53 gram panchayats. Vasai-Virar City is the only Metropolitan City (having population more than 10 lakhs in Palghar district which is also having Municipal Corporation. It is located at North Mumbai. The area of Vasai-Virar City is 311 sq. km. Vasai-Virar City has been separated from Greater Mumbai and Mira-Bhayandar City because of presence of Vasai Creek. The City is well connected to Mumbai by Western Railway and through Mumbai-Ahmedabad National Highway. The city is connected to Navi Mumbai, Thane, Bhiwandi, Kalyan and Panvel cities by the Vasai-Diva Railway line. Vasai Virar city has significant growth potential due to close proximity to Brihan Mumbai. Vasai Virar Corporation is located between 19 deg. 28 min. North-90 deg. 47 min. North latitude and 72 deg. 48 min. East-72 deg. 8 min. East.

3.2 Data acquisition

Approximately, Total 68 major construction materials suppliers are available in Vasai Virar City Municipal Corporation region. Most popular and mostly available suppliers are present in Nallasopara and Vasai highway area, virar east etc. The scope of materials was restricted to only sand, crushed sand, cement, aggregate, brick, steel and concrete owing to its importance and availability. Moreover, six materials were chosen to prepare the GIS model since the same methodology can be applied to other materials also subsequently. Collection of data included personal information of suppliers like name and address, details of materials like cost, brand, quarry source, available stock, lead time, discount, transportation, guarantee for safety, replacement, test certificates, etc. It could be observed that the cost of materials varied among the suppliers. The Vasai Virar City Municipal Corporation map was obtained from Vasai Virar Municipal Corporation (VVMC) office Virar. The map comprised of basic data like latitude-longitude, boundary area, roads, railway lines, and river, apart from depicting the legend. The scale of map is 1:10000, ideal to enable digitisation using QGIS software. In my project most required boundary of Vasai Virar City Municipal Corporation, Roads, supplier's data and supplier's location in Vasai Virar City Municipal Corporation. The data required for digitisation of the Vasai Virar map and the attribute data required for building the data base were collected through a data collection sheet. Simultaneously, GPS was used on site to record the Latitude-Longitude details of the locations of various suppliers.

IV. METHODOLOGY AND APPLICATION OF GIS MODEL

This chapter will give information about suppliers present in Vasai Virar City Municipal Corporation and related their data with QGIS software. It also shows the queries run in various modules. Vector analysis are used to run different query are described. This chapter gives the procedure of data base generation, showing different queries run in QGIS and its need and application.

4.1 Preparation of data base

The database is prepared using Microsoft Excel.

Inserting field name in Column of Excel Sheet as follows

Name of shop, Cost of sand, Cost of Crushed sand, Cost of cement, Cost of steel, Cost of brick, Cost of Concrete, lead time, address, mobile number, Longitude, Latitude etc. and fill available data of all suppliers in particular column.

Digitisation of supplier's locations of Vasai-Virar City Municipal Corporation in point layer is done using database.

4.2 Procedure for database generation

- Step 1: Open QGIS icon → Web → Google Maps → Google Streets
- Google Street Map is opened.
- Step 2: Digitisation of supplier's locations of Vasai Virar City Municipal Corporation in point layer.
- Open layer → Add Layer → Add Delimited Text Layer
- Step 3: Click on Browse → Select this file from computer "Data of Vasai-Virar Shops" → Select File format as CSV → Select Geometry Definition as Point Co-ordinates → Select X Field as LONGITUDE and Y Field as LATITUDE → Click on OK

- Step 4: Select Co-ordinate Reference System as EPSG-4326 → Click OK
- Step 5: Select Data of Vasai Virar shop → Right click → Select Zoom to Layer
- Step 6: Digitilization of Roads
- Select Plugins → InaSAFE → OpenStreetMap Downloader
- Step 7: Select Roads → Select Drag on Map → Select VVCMC Region
- By following the above Steps the data base is generated.

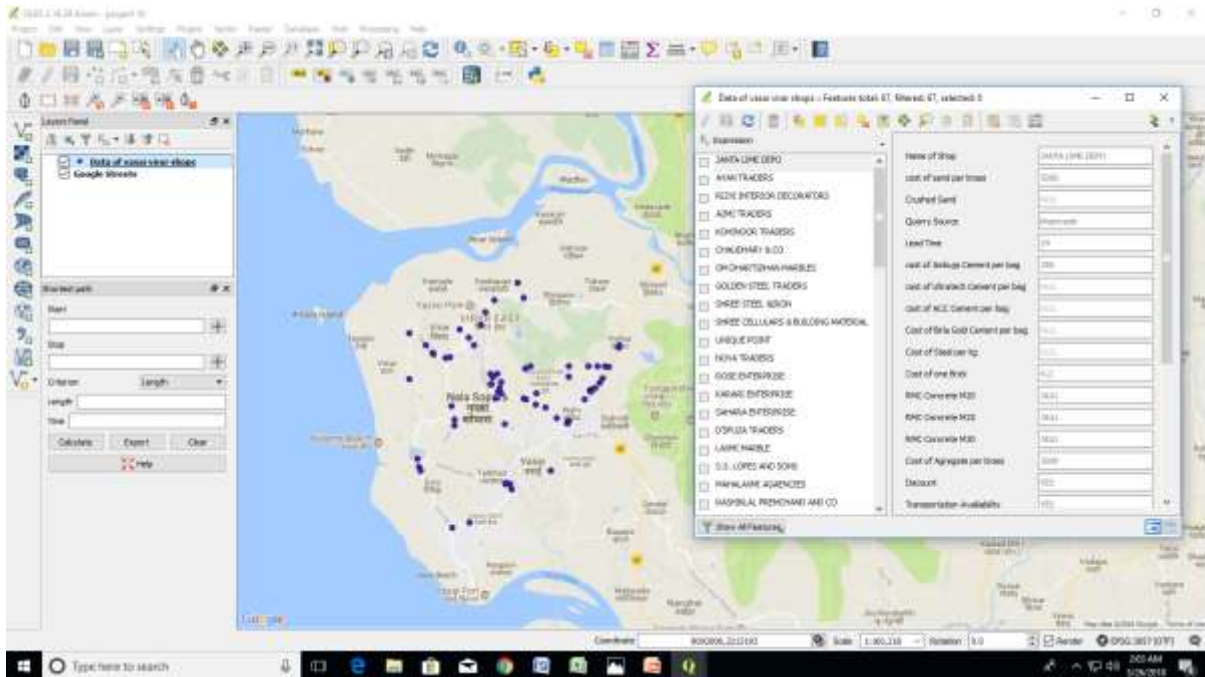


Fig-1: Digitised map shows table creation of supplier location layer of supplier’s data

V. RESULTS

5.1 Generation Of Queries

5.1.1 Query No.1: Find out cost of ACC cement equal to Rs. 330 per bag.

If supplier selection manager wants to know the number of supplier’s having cost of ACC Cement equal to Rs. 330 per bag in Vasai Virar then he easily gets the related information within minutes just by running the query in GIS vector analysis.

5.1.2 Procedure:

- Open QGIS → Vasai Virar project
- Click on layer → Data of Vasai Virar shop → Select filter
- Then enter the condition of query i.e. Cost ACC Cement = “330”.
- Then click on OK button to get result of query.

5.1.3 Result of Query 1:

The result shows that 6 out of 68 supplier’s having cost of ACC Cement equals to Rs. 330 per bag.

5.1.4 Utility of Query:

- It gives better information of all suppliers present in Vasai Virar City Municipal Corporation who having cost of ACC cement is Rs. 330 per bag.
- It helps to find maximum suppliers along with location and easily compare each other.
- After comparing it helps to select nearest best suppliers for purchasing ACC cement of Rs. 330 per bag.

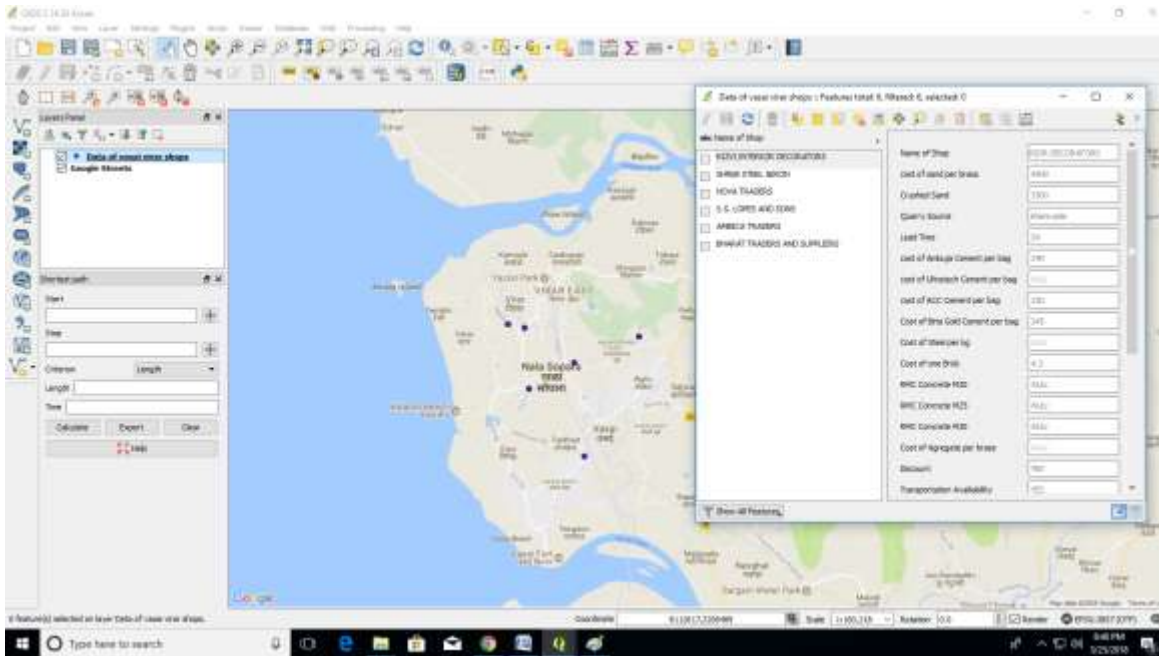


Fig-2: Image shows the result of Query No 1.

5.2 Query No.2: Find out cost of sand is less than Rs. 6000 per brass and lead time is less than or equal to 18 hrs and quarry source is vaitarna with discount.

If supplier selection manager wants to know the number of supplier’s having cost of sand less than Rs. 6000 per brass, lead time is less than or equal to 18 hrs, quarry source is vaitarna with discount. Then he easily gets the related information within minutes just by running the query in GIS vector analysis.

5.2.1 Procedure:

- Open QGIS → Vasai Virar project
- Click on layer → Data of Vasai Virar shop
- Then enter the condition of query i.e. Cost Sand per brass < “6000” AND “Lead Time” <= 18 AND “Quarry source” = vaitarna and “Discount” = Yes.
- Then click on OK button to get result of query.

5.2.2 Result of Query 2:

The result of this query is 10 out of 68 suppliers are eligible for this condition.

5.2.3 Utility of Query:

- Supplier selection manager collect multiple data together by using this query.
- This information helps to give the scale points to suppliers in supplier selection process in one click.
- It will help to reduce the time for supplier selection process.
- And hence supplier selection manager selects ideal supplier in very short time by using no. of condition.

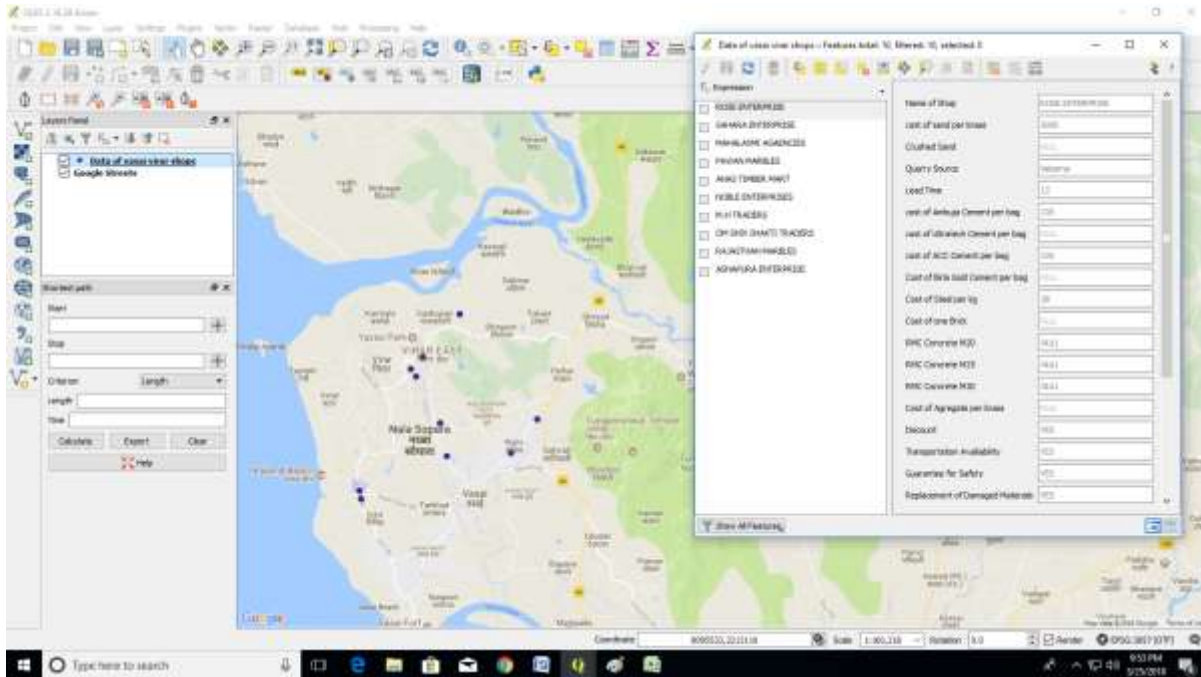


Fig-3: Image shows the result of Query No 1.

VI. CONCLUSION

- Excellent performance of material suppliers is most essential for the smooth obtaining of materials. Supplier evaluation and selection is a usual main issue. The multi-criteria signify both qualitative and quantitative characteristics. Construction contractor should be able to select the appropriate decision-making tool which is easy, reliable and affordable.
- It is essential to have an applicable structured decision-making system in today's complex construction industry. This particularly helps quality decisions and consistency and transparency under complex multi-criteria conditions. The rationale for this research being predicated on the need model the construction material supply behaviour to optimise the material purchasing decisions. In practice, supplier selection is based on perceived importance of selection criteria.
- The nature of the multi-criteria decision method influences on each criterion (e.g. quality, delivery dependability, price, etc.). Therefore, there a possibility for examination of the effect of interdependencies among the criteria towards the decision making process of supplier selection in the construction industry.
- Here GIS tool is very effectively to avoiding problems in very short time which are creating for supplier selection. And which is very helpful for integrate and categorised of supplier's data so any time ideal supplier selection is very easy.
- Approximately 130 major construction materials suppliers are available in Vasai-Virar City Municipal Corporation region. So, it is very time-consuming process to collect required data for supplier selection process from all suppliers present in Vasai-Virar City Municipal Corporation.
- GIS gives information of all data of suppliers like location of suppliers, available materials, cost of materials, quantity, lead time, stock, discount etc.
- Multiple condition of suppliers in GIS queries can be used and it will helps to give the scale points to suppliers in supplier selection process in one click. So reduce the time for supplier selection process and hence supplier selection manager select ideal supplier in very short time.
- GIS queries play an important role when non-availability and emergency requirement of materials.

- GIS network gives the information of shortest route between supplier's location and construction site with distance in very short time.
- GIS network gives the information of another shortest route if route of construction site is not free. It also helps to find out nearest supplier.

REFERENCES

- [1] Aretoulis N., Kalfakakou P., Striagka Z., (2009) "Construction material supplier selection under multiple criteria." Operational Research, vol. 10, no. 2, pp. 209-230.
- [2] Bayazit O., Karpak B. & Yagci A., (2006) "A purchasing decision: Selecting a supplier for a construction company." Journal of Systems Science and Systems Engineering, vol. 15, no. 2, pp. 217-231.
- [3] Benton C., Mchenry F., (2010) "Construction purchasing and supply chain management."
- [4] Chen X., Zhou F., Zhang Y., (2011) "Research on building engineering materials supplier selection based on ANP method", Key Engineering Materials, pp. 474-476.
- [5] Date C.J., (2000) "Introduction to Database Systems (7th Edition)."
- [6] D. Amila, John T., James R., and Sivadass T., (2012) "Supplier Selection in the Construction Material Purchasing Function."
- [7] Elamasri R., Navathe S., (2000) "Fundamentals of Database Systems, (3rd Edition)."
- [8] Gopalkrishnan K., Sundersan M., (2000) "Material management"
- [9] Ho C., Nguyen P., (2007) "Supplier evaluation and selection criteria in the construction industry of Taiwan and Vietnam", International journal of information and management sciences, vol. 18, pp. 403-426.
- [10] Kang C., (2006) "Introduction to Geographic Information Systems."
- [11] Ma L., Yang G., (2010) "The selection of construction material suppliers in supplier relationship management (SRM)" Proceedings of the International conference of information science and management engineering, IEEE, Xi'an, China.
- [12] Mendoza A., (2007) "Effective methodologies for supplier selection and order quantity allocation." PhD thesis, The Pennsylvania State University, Pennsylvania.
- [13] Pi W., Low C., (2005) "Supplier evaluation and selection using Taguchi loss functions", The International Journal of Advanced Manufacturing Technology, vol. 26, no. 1-2, pp. 155-160.
- [14] Prof. C. Vyas, K. Patel, (2008) "Construction Materials Management on Project Sites."
- [15] S. Hossein, M. Dadashzadeh, M. Subremanian, (2006) "Critical Success Factors For Supplier Selection."
- [16] Shah K., (1993) "Material management"
- [17] Thiruchelvam S., Tookey E., (2010) "Review of supplier selection methods." Suitability for Malaysian electricity supply industry, Proceedings of the international conference on industrial engineering and business management (ICIEBM), Yogyakarta, Indonesia.
- [18] Yong L., Qi W., (2012) "Case study of optimal material supplier selection by the Value Engineering Theory", Key Engineering Materials, pp. 887-891.